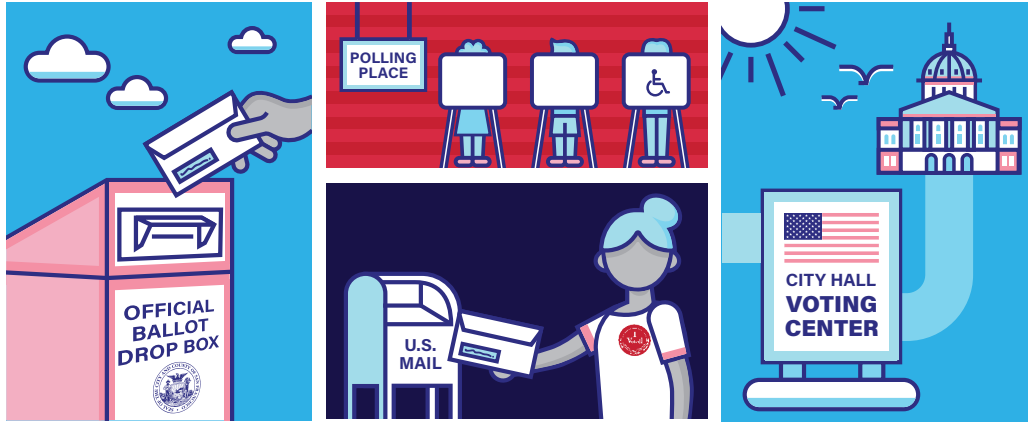


November 8, 2022

Consolidated General Election



WITH MANY SECURE WAYS TO CAST A BALLOT THIS FALL,

**MAKE A PLAN TO VOTE,
ONE AND ALL!**

Voter Registration

If you need to register to vote or update your registration information, go to registertovote.ca.gov or contact us for a paper registration form. To receive a ballot in the mail, you must register by **October 24, 2022**. After that date, you can still register and vote at the City Hall Voting Center or a polling place.

If you are unsure whether you are registered to vote in San Francisco or if your registration information, such as your address, is up to date, go to voterstatus.sos.ca.gov.

Per local law, certain non-citizen San Franciscans can register and vote in the November 8 School Board election. For more information, visit sfelections.org/ncv or contact us.



CITY AND COUNTY OF SAN FRANCISCO
DEPARTMENT OF ELECTIONS

New Supervisorial District Map

Earlier this year at the Redistricting Task Force redrew the boundary lines of San Francisco's Supervisorial Districts. As a result of these changes, your residential address may now fall within a different Supervisorial District, which may affect the Supervisorial contest and candidates that will appear on your November 8 ballot. To view your current voting districts, go to sfelections.sfgov.org/maps or use the online lookup tool at sfelections.org/myvotingdistrict.

Contests on the Ballot

In the November 8, 2022 election, voters will elect federal, state, and local officials, including Members of the Board of Supervisors for the City's even-numbered (2, 4, 6, 8, and 10) Supervisorial Districts, and vote on state and local measures.

For information about candidates and measures appearing on your ballot, refer to your local Voter Information Pamphlet and State Voter Information Guide (both mailed in early October).

Voting Options

All voters now automatically receive their ballots in the mail and have the option of voting in-person on or before Election Day.

1. Vote by Mail

Around October 10, 2022, the Department of Elections will send a vote-by-mail packet, with an official ballot, instructions, an "I Voted!" sticker, and a postage-paid return envelope, to every locally registered voter. The online accessible vote-by-mail system – with screen readable ballots compatible with personal assistive devices – will also become available to all voters at sfelections.org/access.

Whether you use a paper or accessible ballot, you will need to complete three steps:

	Paper Vote-by-Mail Ballot	Accessible Vote-by-Mail Ballot
1 Mark your Ballot	Read the instructions printed on your ballot cards before making your selections.	Go to sfelections.org/access to access your ballot and read the online instructions before making your selections.
2 Prepare your Envelope	Remove the receipt from the top of each ballot card and place the cards in the return envelope. Complete and sign the voter section of the envelope, then seal it.	Print out your ballot and place it in the return envelope. Complete and sign the voter section of the envelope, then seal it.
3 Return your Ballot	To be counted, ballots returned by mail must be postmarked no later than Election Day, November 8 (<i>Check pickup times if you mail your ballot on Election Day</i>). To be counted, ballots returned in person must be hand-delivered to an official ballot drop box* or a polling place by 8 p.m. on Election Day, November 8.	

*The Department of Elections offers 34 official ballot drop boxes in neighborhoods across San Francisco. These boxes will be open 24 hours a day from October 10 through 8 p.m. on Election Day, November 8. For locations, go to sfelections.org/balлотdropoff.

2. Vote Early at the City Hall Voting Center

The City Hall Voting Center will be open to all San Franciscans who wish to register to vote, vote in person, use accessible voting equipment, receive personal assistance, or return their mailed ballots:

- Weekdays from October 11 to November 7, from 8 a.m. to 5 p.m.
- Two weekends before Election Day (October 29-30 and November 5-6), from 10 a.m. to 4 p.m.
- Election Day (November 8), from 7 a.m. to 8 p.m.

3. Vote at your Polling Place on Election Day

Between 7 a.m. and 8 p.m. on Election Day, approximately 500 polling places will be open for in-person voting and ballot drop-off services.

If you decide to vote at your polling place, please check its address at sfelections.org/myvotinglocation or on the back of your Voter Information Pamphlet, as many polling place locations have changed since last election!

San Francisco Needs Poll Workers

Did you know that it takes nearly 2,000 poll workers to facilitate in-person voting? You can help your community vote and earn up to \$295 by serving at a polling place on Election Day, November 8! Bilingual poll workers are especially needed! To apply, go to sfelections.org/pwa or call (415) 554-4395.

To view current employment opportunities at the Department of Elections, visit sfgov.org/jobs.

Observers Welcome

Election processes are open to the public for observation in-person or remotely. To view a calendar of observable activities and learn more about observation process, go to sfelections.org/observe or contact us.

My Voter Portal

Visit sfelections.org/voterportal to check your voter registration information, access your sample ballot, select your elections materials language or format preferences, track your ballot, view your elected officials and voting districts, and more.

Questions? Contact the Department of Elections!



English: (415) 554-4375

Español: (415) 554-4366

中文 : (415) 554-4367

Filipino: (415) 554-4310

TTY: (415) 554-4386

sfvote@sfgov.org

sfelections.org

Department of Elections
1 Dr. Carlton B. Goodlett Pl.
City Hall, Room 48
San Francisco, CA 94102

    /sfelections