

Have Questions?

Department of Elections
1 Dr. Carlton B. Goodlett Place
City Hall, Room 48
San Francisco, CA 94102
Monday – Friday
8 a.m. – 5 p.m.

Email: SfVote@sfgov.org
Phone: (415) 554-4375
Fax: (415) 554-7344
TTY: (415) 554-4386



POP-UP
Events Are
Coming to Your
Neighborhood!

Join our Voting System Pop-up events throughout the City to gain hands-on experience with the new voting equipment and the new ballot format.

For more information visit sfelections.org, call (415) 554-4375, or visit our office in City Hall, Room 48.



High Security Standards

The new voting system meets strict security standards and has been certified for use by the California Secretary of State.

No part of the system connects to the internet, or receives or transmits data through any type of external communication network.

Prior to each election, the Department of Elections conducts testing on all voting equipment to verify that the machines are mechanically functional and logically accurate. This testing is open to public observation.

San Francisco, Meet Your New Voting System

San Francisco voters will begin using a new voting system in the **November 5, 2019 election!**



VOTE

Let us introduce you to some of the changes and features of the **new voting system** to help you prepare to vote:

- ✓ More Rankings Available in Ranked-Choice Voting Contests
- ✓ More Intuitive Ballot Marking
- ✓ New Ballot-Marking Device with Enhanced Accessible Features
- ✓ Enhanced Election Transparency
- ✓ High Security Standards

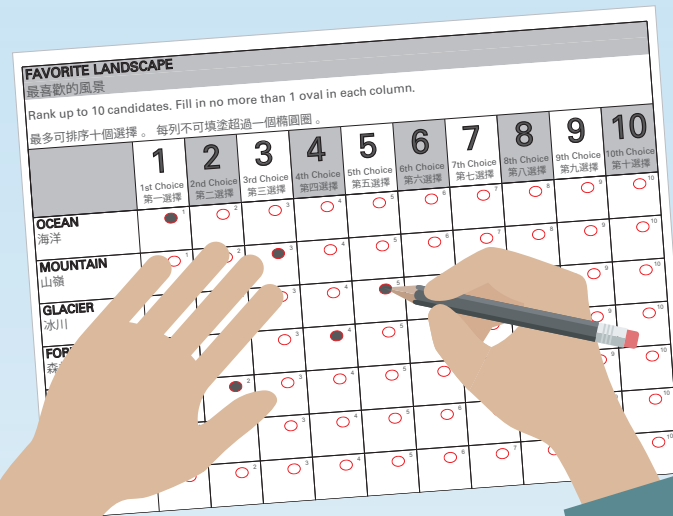
More Intuitive Ballot Marking

When marking their ballots, voters will fill in ovals next to their selections, instead of connecting arrows as in the past. Voters will use bilingual ballots, available in English and Chinese, Spanish, or Filipino.

New Ballot-Marking Device with Enhanced Accessible Features

Every polling place and the City Hall Voting Center will have an accessible ballot-marking device, featuring audio and touchscreen interfaces. The device is compatible with assistive technology, such as keypads, sip-and-puff, and head-pointers.

The ballot-marking device does not store or tabulate votes. Voters will print their ballots and insert them into the ballot-scanning machine that tabulates voted ballots.

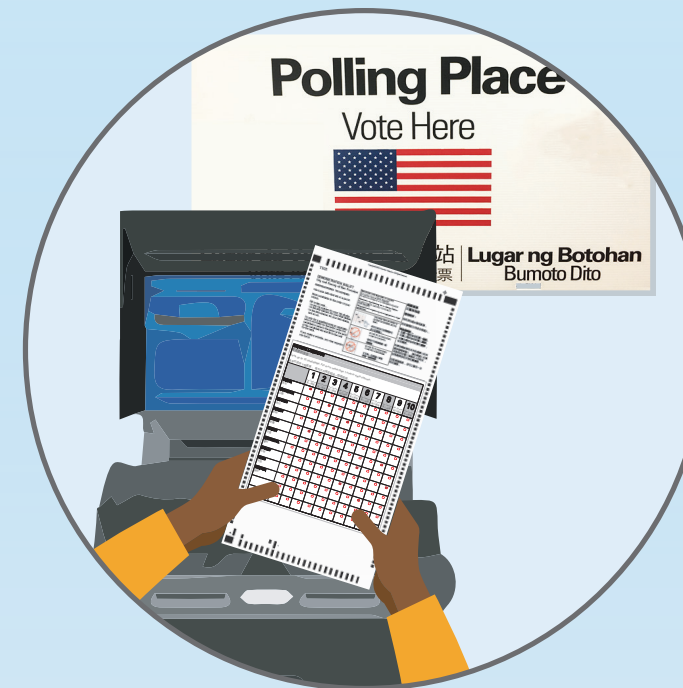


More Rankings Available in Ranked-Choice Voting Contests

The new ballot format, with a grid layout, allows voters to rank up to 10 candidates in a ranked-choice voting contest, instead of three candidates as in the past. Visit sfelections.org/rcv to practice marking a demonstration ballot.

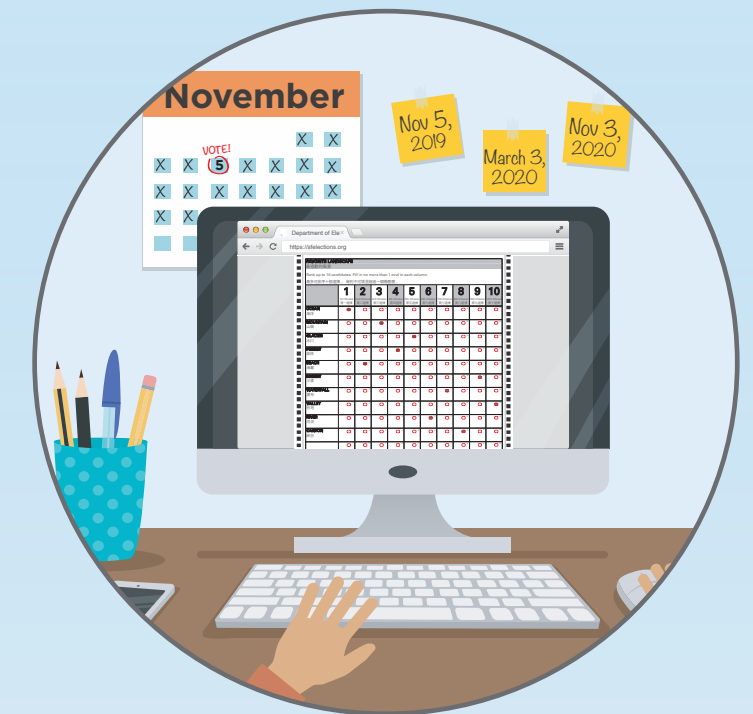
Enhanced Election Transparency

Every polling place will have a ballot-scanning machine that scans and tabulates voted ballots. Scanned images of voted ballots and vote count data will be stored on the machine's memory card.



Every polling place will have a ballot-scanning machine that scans and tabulates voted ballots.

The Department of Elections will post images of scanned ballots, each with notes indicating how vote marks were interpreted and counted by the voting equipment, on sfelections.org. Members of the public can view and sort the ballot images for comparison against official election results.



Scanned ballot images will be posted on sfelections.org for public viewing.