

Helpful Resources

View information about elections, voting, and more at sfelections.org

Register to vote or update your registration at registertovote.ca.gov

View your registration, request a replacement ballot, and more at sfelections.org/voterportal

Map out your voting plan for the November 3 election at sfelections.org/myelectionnavigator

Sign up for ballot tracking notifications via email, text, or call at wheresmyballot.sos.ca.gov

Learn about ranked-choice voting (RCV) and try our RCV practice tool at sfelections.org/rcv

Request translated election materials at sfelections.org/language

Questions?



English: (415) 554-4375
Español: (415) 554-4366
中文: (415) 554-4367
Filipino: (415) 554-4310
TTY: (415) 554-4386

sfvote@sfgov.org

Department of Elections
1 Dr. Carlton B. Goodlett Pl.
City Hall, Rm 48
San Francisco, CA 94102

Serve as a Poll Worker on November 3!

Help your community and receive a stipend of up to \$240 for your service. Each poll worker is assigned to one of 588 polling places to facilitate voting on Election Day. To apply to be a poll worker, visit sfelections.org/pwa or call (415) 554-4395.

    /sfelections



SAN FRANCISCO
ELECTIONS

Have your say! **VOTE** your way!

**November 3, 2020,
Consolidated General Election**

To ensure that San Franciscans can exercise their right to vote in a safe manner during the November 3 election, the Department of Elections will mail ballots to all registered voters in October.



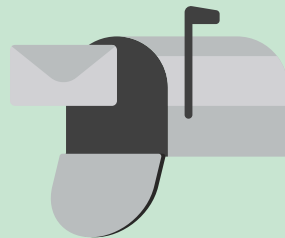
Three Ways to Vote

1. Voting by Mail

To ensure that San Franciscans can vote in a safe manner, all voters will receive ballots in the mail in October. Your ballot packet will include official ballot, instructional insert, postage-paid return envelope, and "I Voted!" sticker.

Vote and return your ballot as early as possible! To be counted, your ballot envelope must be postmarked on or before November 3.

To track the status of your ballot, go to sfelections.org/voterportal. You may also sign up for ballot notifications via email, text, or call at wheresmyballot.sos.ca.gov.



Accessible Vote-by-Mail (AVBM) System

All voters may use the AVBM system to access their ballots at sfelections.org/access. The AVBM system allows voters to mark screen readable ballots and is compatible with personal assistive technology such as head-pointer and sip and puff devices.



2. Voting at the City Hall Voting Center

The City Hall Voting Center will provide registration and voting services between October 5 and the close of the polls on Election Day, November 3.

To protect public health, the City Hall Voting Center will be set up in front of Bill Graham Civic Auditorium on 99 Grove Street, between Polk and Larkin streets.

The City Hall Voting Center will be open as follows:

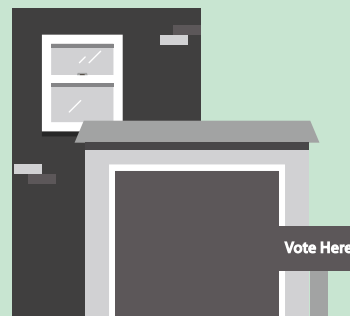
- Mon-Fri, October 5-November 2, from 8 a.m. to 5 p.m.
- Sat/Sun, October 24-25 and October 31-November 1, from 10 a.m. to 4 p.m.
- Election Day, Tuesday, November 3 from 7 a.m. to 8 p.m.



3. Voting at your Polling Place

On Election Day, Tuesday, November 3, 588 polling places will be open in the City for in-person voting and vote-by-mail ballot drop-off from 7 a.m. to 8 p.m. The Department of Elections has adopted several new health and safety protocols at all polling places.

To find the location of your polling place and check wait times, go to sfelections.org/myvotinglocation.



Registering to Vote

To check if you are registered to vote in San Francisco or confirm that your information is up to date, go to sfelections.org/voterportal.

To register to vote, go to registertovote.ca.gov or contact us to receive a registration form in the mail.

Important Dates

October 5: Start of early voting (ballots begin arriving to mailboxes, and the City Hall Voting Center opens).

October 19: Last day to register to vote and receive a ballot in the mail. After October 19, anyone who is eligible to vote can still register conditionally and vote provisionally in person.

Election Day, November 3: All polling places are open for ballot drop-off and in-person voting from 7 a.m. to 8 p.m. Ballots returned by mail must be postmarked on or before this date to be counted.